

lekseecon

Installation Manual

Version **10.6.4**

January 3, 2017

Nico W. Kaan



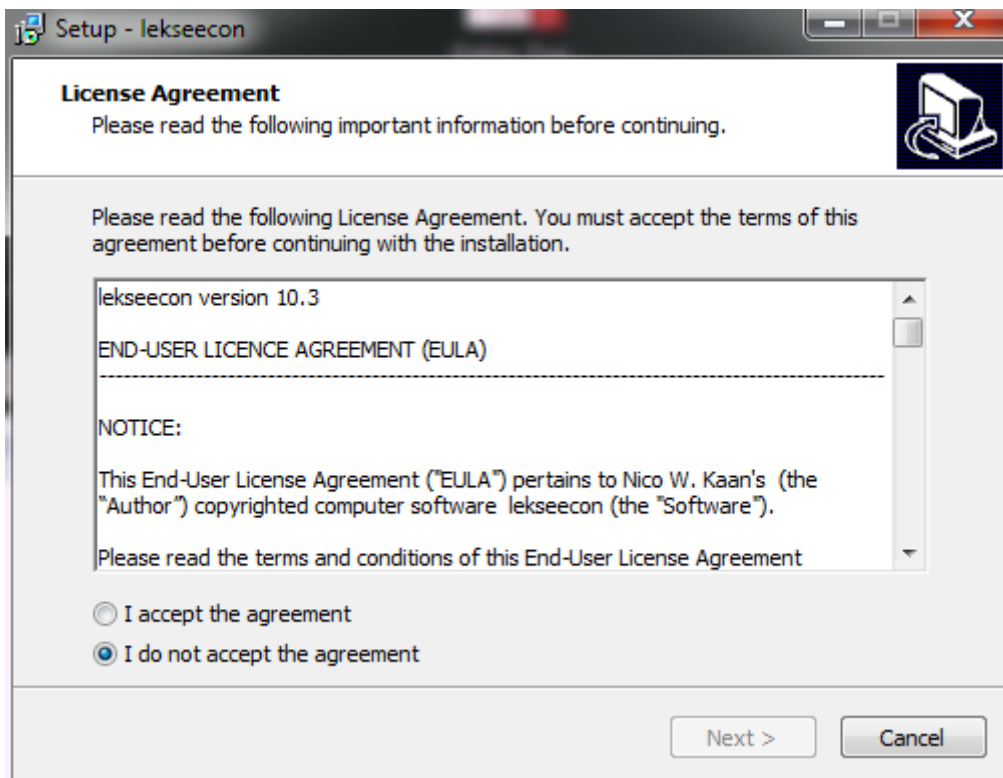
1 Fresh installation

Run installer program '**setup_lekseecon_v10.6.4.exe**' at the **Windows Vista** (or higher) PC running MS Flight Simulator.

Choose an installation Language (default English). Note this is just for the Setup program text, while lekseecon is in English only:

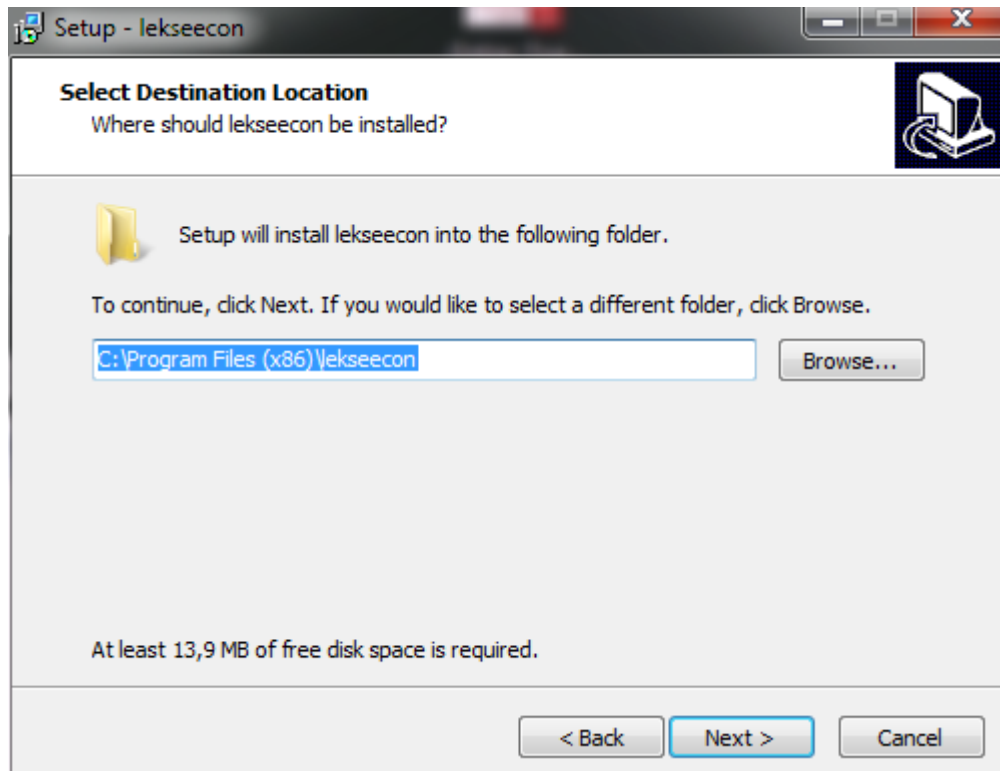


Accept the end-user licence agreement (EULA) and click Next:

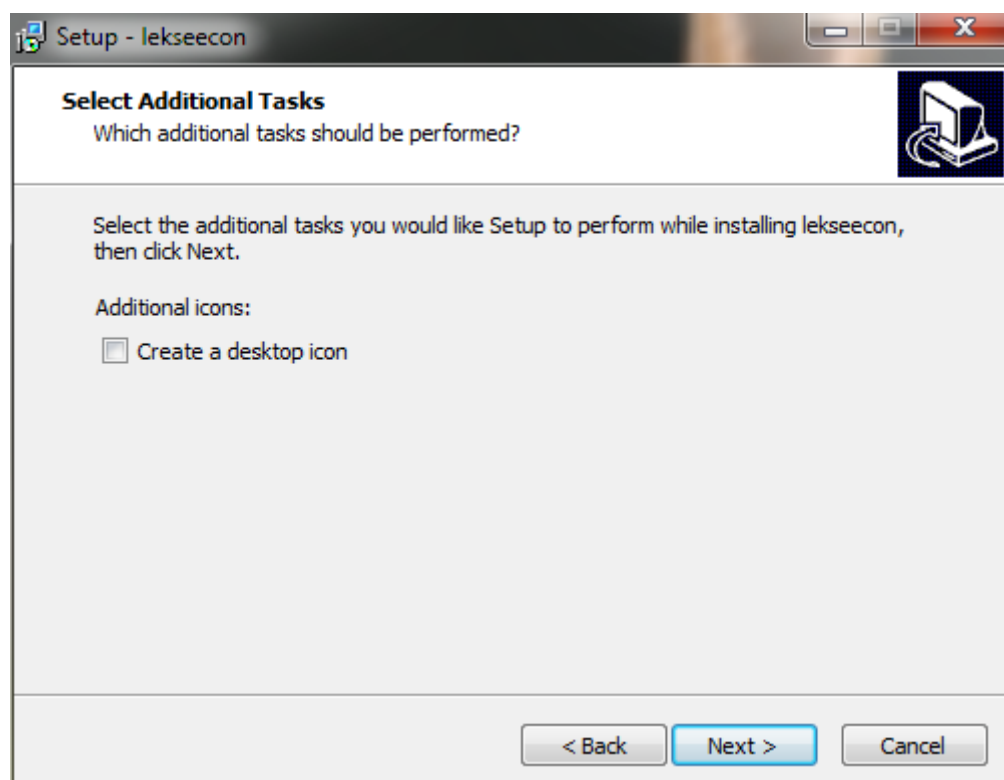


Installation in folder C:\Program Files (x86)\lekseecon is default.
You may also choose C:\lekseecon or D:\lekseecon, as long as the folder is named lekseecon. But, do not install lekseecon in the Modules folder of MS Flight Simulator.

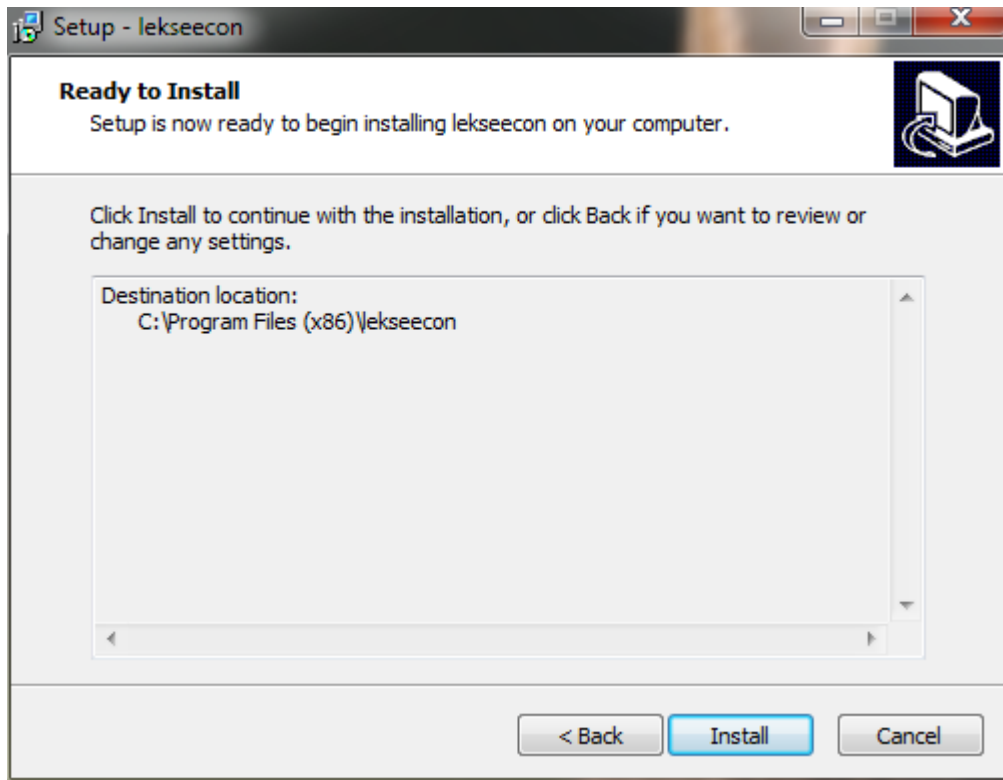
Click Next :



Optional: select Create a desktop icon, then click Next:

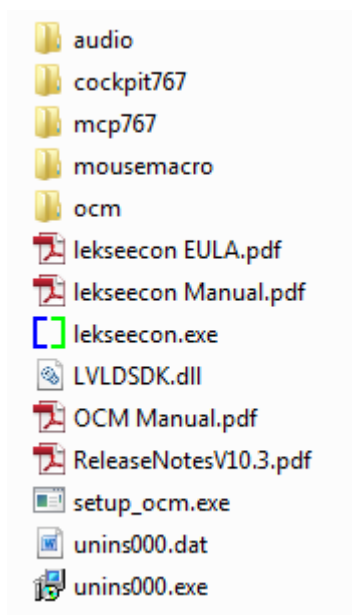


Click Install:



After installation you will find a **lekseecon folder** and a **lekseecon start entry** in All Programs.

Lekseecon folder



The lekseecon folder contains the **lekseecon.exe** program and its documentation (Manual, Release Notes and EULA). Always run lekseecon from this folder.

An important file your lekseecon folder is LVLDSK.dll. Just leave it there, lekseecon will link this dynamic link library at start-up.

Sub folders **cockpit767** and **mcp767** contain SIOC sources for a Level-D 767 cockpit and a Boeing 767 MCP. *Note that in subfolder ocm/mcp you will find scripts for the Opencockpits737 MCP modified to be used as a 767 MCP, which is a different story.*

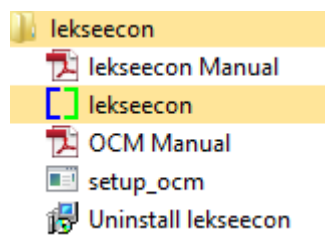
Sub folder **audio** contains audio files for the lekseecon GPWS.

Sub folder **mousemacro** contains FSUIPC mouse macros for the Level-D 767.

Sub folder **ocm** contains SIOC scripts for Opencockpits modules.

The **setup_ocm.exe** program is for configuring Opencockpits Modules connected to your PC. Read more in the OCM Manual that's in the lekseecon folder too.

Lekseecon start entry:



2 Upgrade to a new version

Just install the new version by running the installer program. The installer will always uninstall an existing version first and then suggest the Setup language of your choice and the installation folder of your choice of your previous installation.

The new version will continue to run with your settings in lekseecon.ini (if in use).

3 Uninstall

Removing lekseecon for your PC can be done via the Control Panel/Uninstall Program or by selecting Uninstall lekseecon from the Lekseecon Start entry (just like any other windows program).