

# PSXT for MSFS 2024 Quick Start Guide, March 30<sup>th</sup> , 2025

Here are the steps needed to get PSXT up and running with MSFS 2024.

**A. If you have not yet an AI aircraft package installed in MSFS 2024:**

By far the best, largest and longest available AI aircraft package for MSFS 2024 today is **AIG**. Be aware that it takes an afternoon to install all.

Note that you only need the [AIG AI Manager](#) for downloading airlines models and liveries, **not** the AIG Traffic Controller (see also the Manual 2.4 about an important fix).

An alternative to AIG is to download the [FSLTL base models](#), that will give you 2007 AI aircraft immediately. See this video: "[How to use FSLTL aircraft with PSXT](#)".

Another quick alternative is the install **JustFlight (FSTraffic)**. PSXT will use the models/liveries in **justflight-aircraft-traffic-fleet** only.

**B. Go to the [My website](#) and download PSXT for MSFS 2024.**

Extract the zip file and run the setup file with administrator rights.

Install at your Simulator computer. The default install locations is **C : \PSXT**

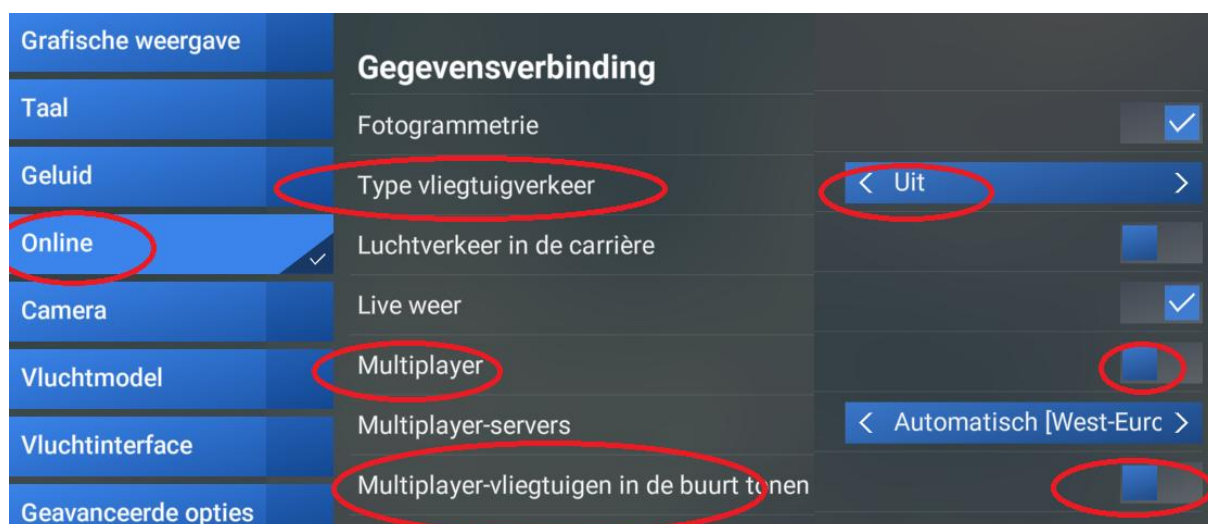
You may change that to another location/drive, but don't install it in the Community folder or in the Program Files folders, and preferably do not change these installation folder names!

**C. Go to the [RealTraffic website](#) and buy a 24-day **standard** license for USD **\$9.99** (no automatic renewal). You will receive a **license** by email. Do NOT download and install the RT software (there is no need too).**

**D. Make sure you have the Microsoft Visual C++ Redistributable for Visual Studio 2022, version 17, architecture x64. The standalone installer for (VC\_redist.x64.exe) can be [downloaded here at Microsoft](#).**

**Start MSFS 2024, and set** these options to get rid of MSFS live traffic, multiplayer traffic, and static parked aircraft (sorry for the Dutch language, but you probably figure it out):

This is **Settings-> General->Online**:



# PSXT for MSFS 2024 Quick Start Guide, March 30<sup>th</sup>, 2025

And this is **Settings->General->Graphics**:

<b>Grafische weergave</b>	Terreinschaduwen	< 512
Taal	Contactschaduwen	< Hoog
Geluid	Effecten van cockpitruit	< Hoog
Online	Omgevingsocclusie	< Hoog
Camera	Reflecties van kubuspatroon	< 256
Vluchtmodel	Reflecties van stralen	< Hoog
Vluchtinterface	Lichtschachten	< Hoog
Geavanceerde opties	Scherptediepte	< Hoog
Juridische informatie en credits	Bewegingsonscherpte	< Hoog
	Vernieuwingsfrequentie glazen cockpit	< Gemiddeld
	Kwaliteit personages	< Hoog
	<b>Kwaliteit verkeer op luchthaven</b>	<b>&lt; Uit</b>
	<b>Luchtverkeer</b>	<b>&lt; Uit</b>

And this is **Settings->General->VR**:

<b>VR-modus</b>	Raytracingschaduwen	
<b>Grafische VR-voorziening</b>	Schaduwkaarten	< 1024
	Terreinschaduwen	< 256
	Contactschaduwen	< Laag
	Effecten van cockpitruit	< Hoog
	Omgevingsocclusie	< Laag
	Reflecties van kubuspatroon	< 192
	Reflecties van stralen	< Laag
	Lichtschachten	< Laag
	Vernieuwingsfrequentie glazen cockpit	< Laag
	Kwaliteit personages	< Laag
	<b>Kwaliteit verkeer op luchthaven</b>	<b>&lt; Uit</b>
	<b>Luchtverkeer</b>	<b>&lt; Uit</b>

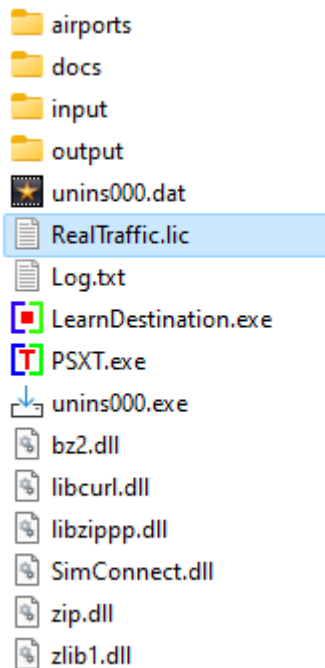
# PSXT for MSFS 2024 Quick Start Guide, March 30<sup>th</sup> , 2025

Start **PSXT.exe** via the short cut at your desktop. If it says “**You have no RT license**” in the top right corner, and you do have a license, exit PSXT, and add your RT license string in the **RealTraffic.lic** file just created in your PSXT installation folder. Then start PSXT again.

By **default** PSXT and PSXTraffic for MSFS are in **MSFS 2020** mode indicated by a ticked checkbox in front of the **Install path** line. Uncheck this box to let PSXT restart in MSFS 2024 mode.

## A few important tips for a smooth start

Where to find RealTraffic.lic:



## Community folder

PSXTraffic will search for your MSFS 2024 Community folder first. If found it will show it, if not found you must provide information:

Type a full path to your Community folder in the “Community Folder” text box in the PSXT UI and press Enter. You may give it up/to or with Community included, like:

C:\MSFS2024\Community

or

C:\MSFS2024

## Parameters in the PSXT window (GUI)

Use all **default** settings, don't change anything before you have read the Manual.

## What to do with empty airports?

Not all addon airport are already **off-line** learned (filled) by PSXT and RealTraffic. You may have bought an addon that is unknown to PSXT.

Please **zip** the folder “**TBLO**” (you can find that in the PSXT installation folder) and mail that to [leveld757@gmail.com](mailto:leveld757@gmail.com).